

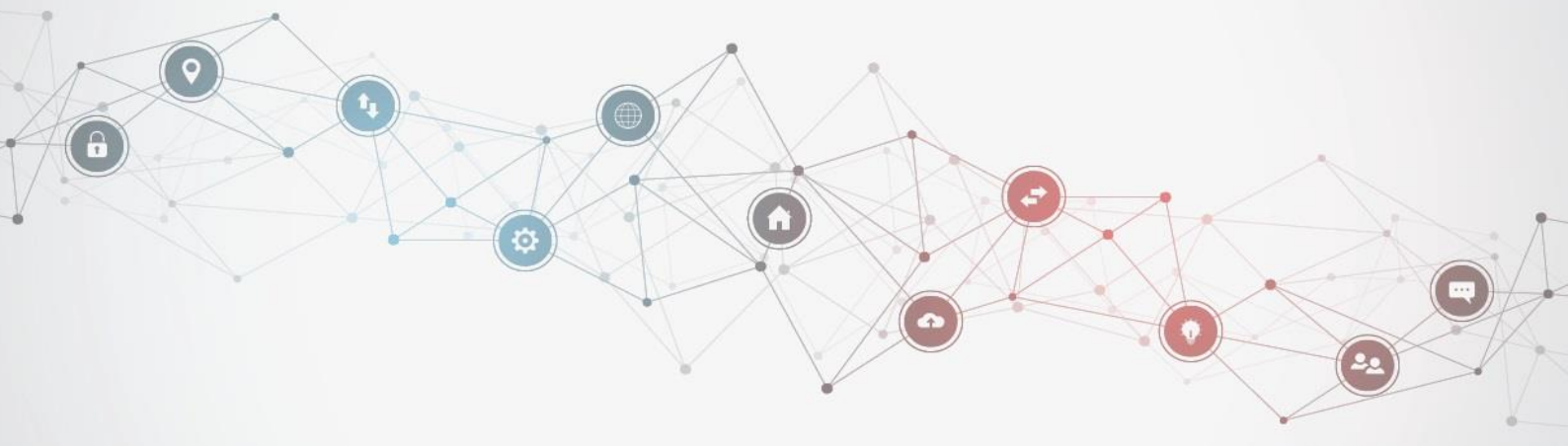


audius:Add-ons

Functional Overview

audius:SEPA – the Interface for Direct Debit

audius



audius:SEPA

With audius:SEPA, audius presents an interface facilitating the seamless transfer of invoice data from Microsoft Dynamics 365 to banks in the SEPA format.

Versatility Across Dynamics 365 Applications:

This add-on is compatible with all applications rooted in Microsoft Dynamics 365 Sales and Dynamics 365 Field Service, catering to diverse industries. Furthermore, it seamlessly integrates with audius industry solutions.

Functional Overview

Interface Properties

SEPA FORMAT

The export file in XML format complies with the requirements of SEPA 3.6.

DIRECT DEBIT

Invoices designated for direct debit are generated as a direct debit file. To facilitate this, the payment method "collection" must be specified in the CRM System invoices. This ensures an accurate count of direct debits made by customers.

DIFFERENTIATION BETWEEN BASIC DIRECT DEBIT AND COMPANY DIRECT DEBIT

The import file incorporates a clear distinction between SEPA basic direct debit and SEPA corporate direct debit.



Contact Persons

Contact us for individual information or advice:

Bert Enzinger

Managing Director, Sales
bert.enzinger@audius-sc.de
+49 8654/4608-12

Christina Schwarzer

Sales
christina.schwarzer@audius-sc.de
+49 8654/4608-25

audius GmbH
Lindenstraße 23
83395 Freilassing
+49 8654/4608-0
office@audius-sc.de
www.audius.de

© audius GmbH 2023. Disclosure of the content is prohibited.